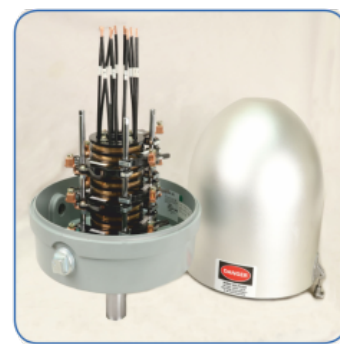


UMC PRODUCTS

'We work with long-lasting brands for our customers'



UMC GEARBOX PRODUCTS

FINAL DRIVE GEARBOX
Quality Irrigation Products

725-U™ Gearbox
Designed for lightweight spans and small tires

The UMC® 725-U™ gearbox is designed for use on center pivots and lateral / linear irrigation systems with lightweight spans. It is a step up from the Moderate Duty™ gearbox with a larger diameter output shaft and larger output bearings allowing it to handle more overhung load.

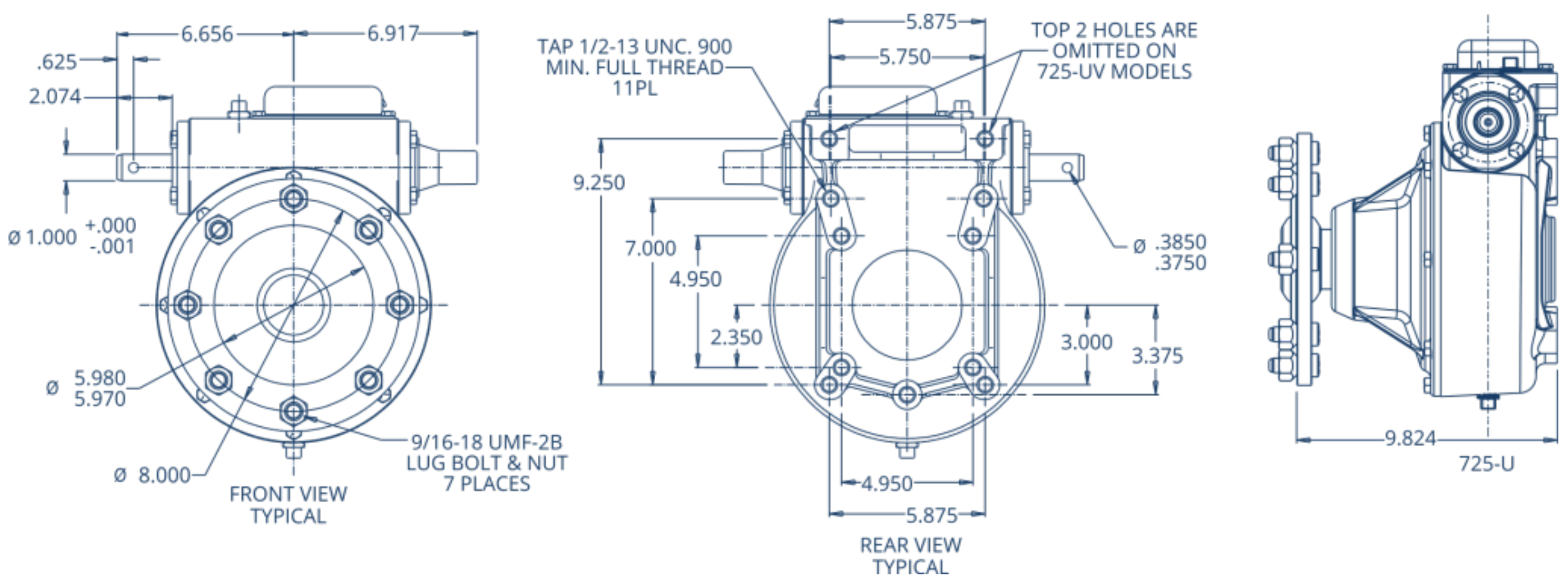


FEATURES AND BENEFITS

The UMC® 725-U™ gearbox features a 50:1 gear ratio, a 2.25' diameter output shaft, a steel worm gear and a cast iron bull gear.

- 2.25' diameter steel output shaft
- 50:1 gear ratio
- Dual input seals and a triple lip output seal'
- Full cycle external expansion chamber with stainless steel cover
- 11-Bolt mounting pattern
- External seal protectors for input and output seals
- Top oil fill plug
- Filled with extreme pressure gear oil
- Dual ended input shaft with a hub cap for the unused end
- Positive wheel register

Dimensional Drawing | 725-U Final Drive Gearbox



TOWABLE FINAL DRIVE GEARBOX

Quality Irrigation Products

TNT-2-U™ Gearbox

Designed for towable center pivots and lateral/linear irrigation systems

The patented UMC® TNT-2-U™ gearbox is designed for use on towable center pivots and lateral / linear irrigation systems. The gearbox design allows the worm gear to disengage from the bull gear so the output shaft can rotate freely, enabling users to move irrigation systems from one field to another.

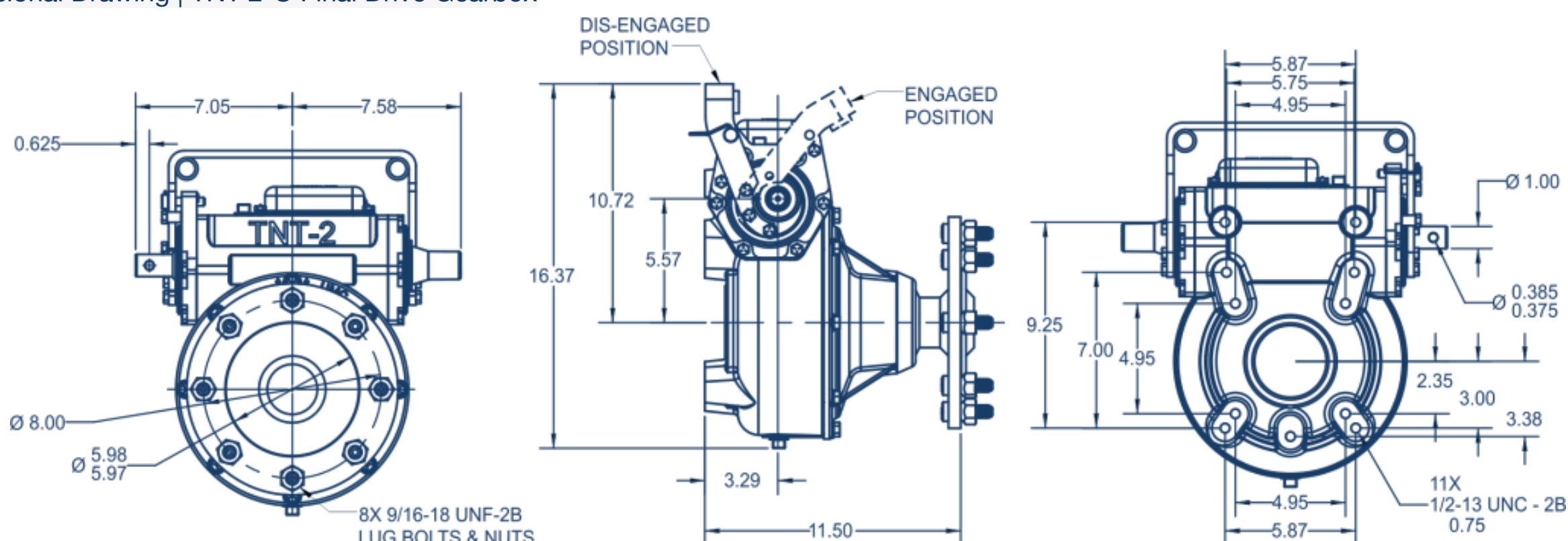


FEATURES AND BENEFITS

The patented UMC® TNT-2-U™ gearbox features a 50:1 gear ratio, a 2.25' diameter output shaft and a disengage-able worm gear for towing.

- 2.25' diameter steel output shaft
- 50:1 gear ratio
- Dual input seals and a triple lip output seal
- Disengage-able worm gear for towing
- Full cycle external expansion chamber with stainless steel cover
- 11-Bolt mounting pattern
- External seal protectors for input and output seals
- Top oil fill plug
- Filled with extreme pressure gear oil
- Dual ended input shaft with a hub cap for the unused end
- Extra long carriage bolts allow use with reinforced rims
- Positive wheel register
- Bronze gear optional

Dimensional Drawing | TNT-2-U Final Drive Gearbox



TOWABLE PRODUCTS

Quality Irrigation Products

BT4-B™ Bolt-on Towable Hub

Designed to convert standard non-tow gearboxes into towable gearboxes

The UMC® BT4-B™ Bolt-on Tow Hub is designed to convert standard non-tow gearboxes into towable gearboxes. It fits all UMC® gearboxes and works with all gear ratios. It requires a pin and bracket assembly (sold separately) to lock the tow hub.

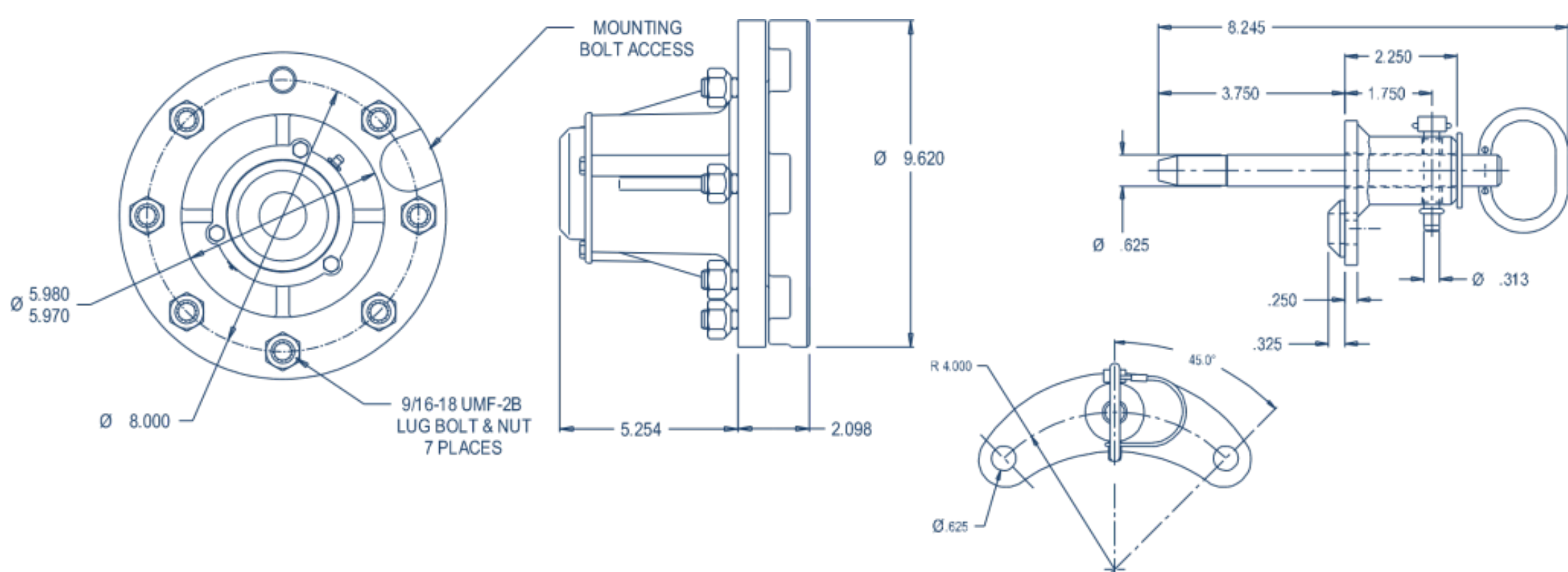


FEATURES AND BENEFITS

The UMC® BT4-B™ bolt-on tow hub comes filled with grease and features a 2.00' shaft with a cast iron hub and extra long carriage bolts that allow use with reinforced rims.

- Fits all UMC® gearboxes
- Locking pin and bracket available (sold separately)
- Works with all gear ratios
- Heavy duty cast steel 2.00" shaft and cast iron hub
- Grease and pressure relief fittings included
- Bolt-on hub cap secured with three 1/4-20 bolts and sealed with silicone RTV
- Tapered roller bearings
- Extra long carriage bolts allow use with reinforced rims
- Positive wheel register

Dimensional Drawing | BT4-B Towable Hub & Pin Bracket Assembly



ATLANTIS
CENTER PIVOT & LINEAR IRRIGATION SYSTEMS

COUNT ON IT

ELECTRICAL COMPONENTS

Quality Irrigation Products

Collector Rings

Designed to fit most center pivots

UMC®'s Collector Rings are made up of stationary brass rings with contact brushes that rotate around them. This assembly makes it possible to supply continuous power and signal voltage to the motors and controls of center pivot irrigation systems as the machine rotates around the pivot point.

- Available styles: 10-ring, 11-ring, and 13-ring available with an aluminum or plastic cover
- Heavy duty die cast aluminum base
- Specially designed cover clamps
- Large copper brushes are 80% copper and 20% graphite for less resistance
- Seamless ring to reduce brush wear
- Wires are numbered for easy identification
- Grease-able bearings in the base, stops shaft seizure
- Individually packaged
- Rated Voltage: 600 VAC
- Rated Current: 30 AMPS All Rings
- CSA and CE Certified

FEATURES AND BENEFITS

UMC®'s field proven collector rings are manufactured from the highest quality materials to ensure safe, reliable and trouble free operation.



CENTER DRIVE GEAR MOTOR

Quality Irrigation Products

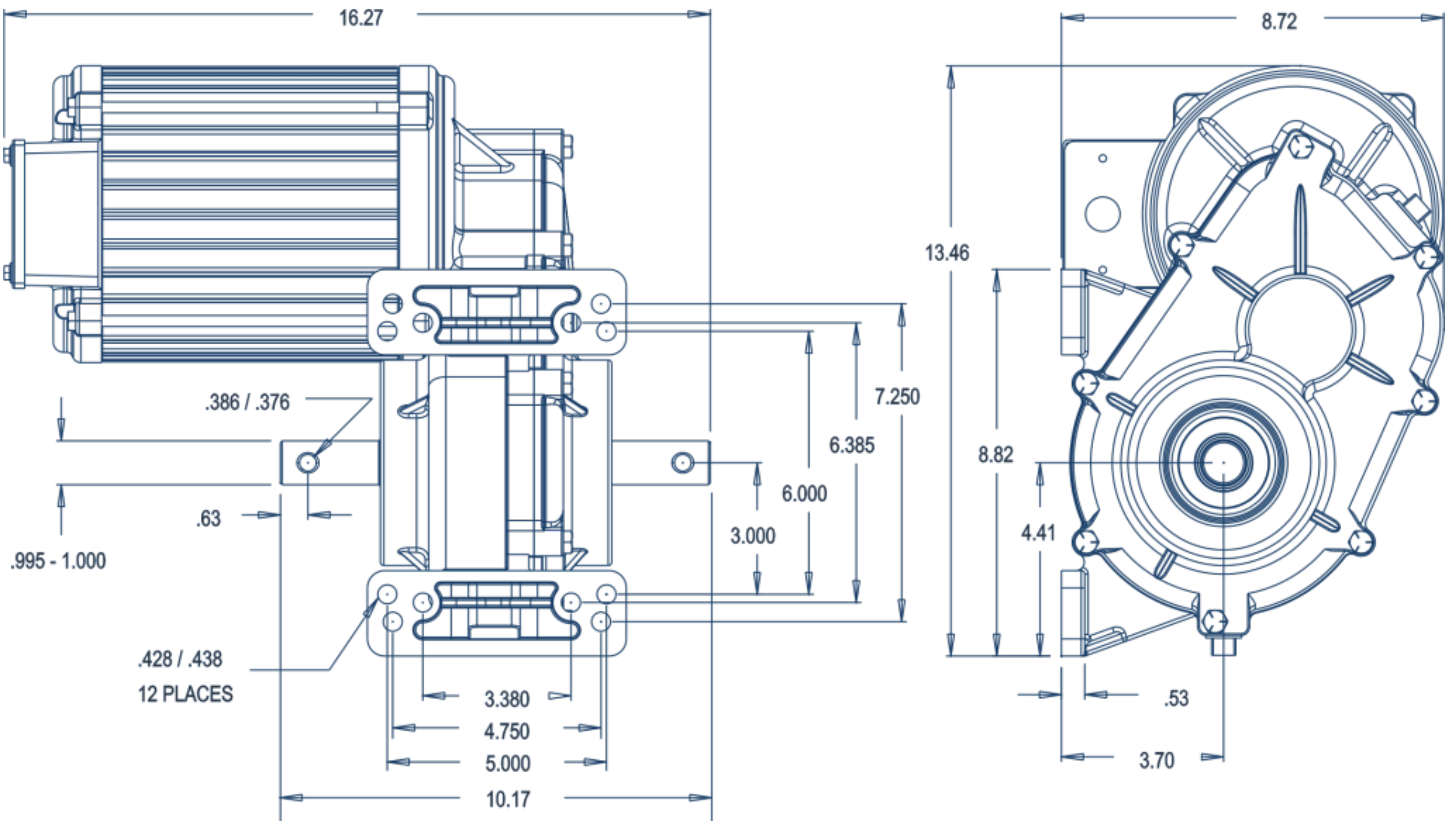
Power Saver® 3.5

The most dependable center drive in the industry

The Standard UMC® Power Saver® 3.5 center drive is designed for use on center pivots and lateral / linear irrigation systems. It has been the center drive of choice for decades on systems around the world and is field proven to be tough and dependable.



Dimensional Drawing | Power Saver 3.5 Electric Gearmotor



ATLANTIS
CENTER PIVOT & LINEAR IRRIGATION SYSTEMS

COUNT ON IT

FEATURES AND BENEFITS

The Standard UMC® Power Saver® 3.5 center drive features a high efficiency helical gear reduction and industry leading irrigation duty motors that offer long life and quiet operation. It is available in 6 different gear ratios with 3 motor options.

- 95% efficient helical gear reduction
- Heat treated steel gears
- 6 gear ratio options (20:1, 25:1, 30:1, 40:1, 50:1 and 60:1)
- Available with three 3-phase motor options CSA, CE, CCC and SASO certified motors IP 45 rated
- Aluminum finned stator for superior heat dissipation
- Motor drain holes protected by UMC's exclusive Spray Guard™ for superior spray protection
- Internally vented junction box protects motor lead connections from moisture
- Magnet wire to motor lead connections covered with Teflon tubing and encapsulated with P.D. caps for superior moisture protection
- Class H wire and Class F insulation
- Thermally protected motor with automatic reset located in the junction box
- Multi-bolt mounting pattern fits (3 3/8' x 6 3/8'), (4 3/4" x 7 1/4") and (5' x 6') bolt patterns
- Dual input and output seals reduce oil leaks
- Top oil fill plug positioned to set the correct oil level
- Integrated crop guard for coupler shields to nest and protect oil seals from crop wrapping and debris
- Seals savers on output to protect oil seals

Part Number	Gear Ratio	Motor HP	Service Factor	Volts AC	Frequency	Output RPM	Full Load AMP
06168-101G	60:1	0.60HP	1.0	460 / 380	60 / 50 Hz	14 / 11 RPM	1.6 / 1.7 A
06168-101Q	60:1	0.75HP	1.3	460 / 415 / 380	60 / 50 / 50 Hz	29 / 24 RPM	1.4 / 1.4 / 1.5 A
06168-101H	50:1	0.75HP	1.3	460 / 415 / 380	60 / 50 / 50 Hz	35 / 29 RPM	1.4 / 1.4 / 1.5 A
06168-101A	40:1	0.75HP	1.3	460 / 415 / 380	60 / 50 / 50 Hz	44 / 35 RPM	1.4 / 1.4 / 1.5 A
06168-101B	30:1	1.50HP	1.0	460 / 415 / 380	60 / 50 / 50 Hz	57 / 47 RPM	2.4 / 2.7 / 2.7 A
06168-101F	25:1	1.50HP	1.0	460 / 415 / 380	60 / 50 / 50 Hz	67 / 55 RPM	2.4 / 2.7 / 2.7 A
06168-101D	20:1	1.50HP	1.0	460 / 415 / 380	60 / 50 / 50 Hz	86 / 70 RPM	2.4 / 2.7 / 2.7 A

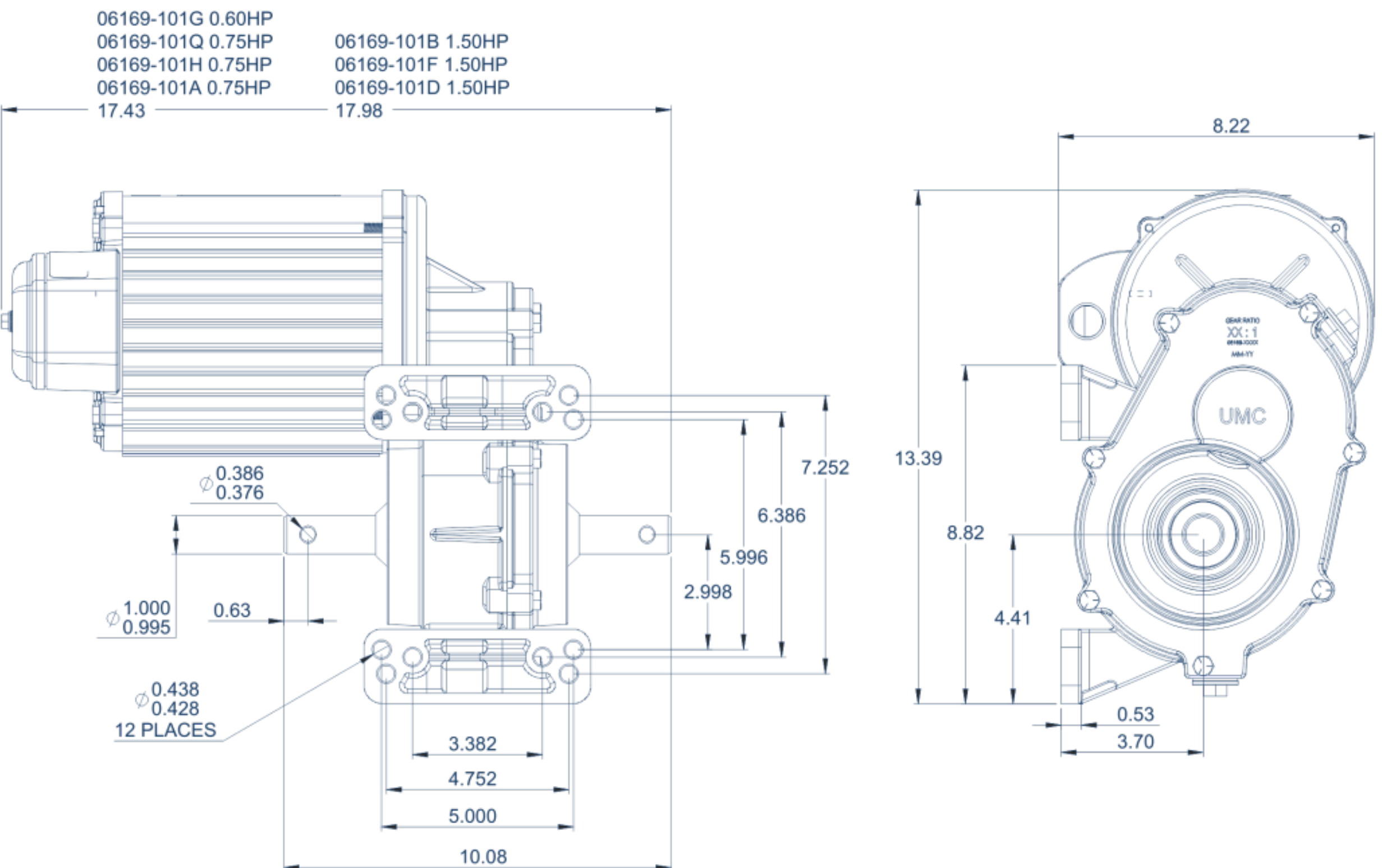
CENTER DRIVE GEAR MOTOR

Quality Irrigation Products

Power Saver® 4

The most advanced center drive in the industry

The Standard UMC® Power Saver® 4 is our newest high performance helical center drive designed for use on center pivots and lateral / linear irrigation systems. It is a direct replacement for its predecessor, the Power Saver® 3.5, and has several new features that set it apart from every other center drive in the industry.



FEATURES AND BENEFITS

The Standard UMC® Power Saver® 3.5 center drive features a high efficiency helical gear reduction and industry leading irrigation duty motors that offer long life and quiet operation. The Standard UMC® Power Saver® 4 center drive features an optimized helical gear design that offers longer life and quieter operation, cartridge output seals that eliminate shaft grooving and reduce oil leaks, and a single bolt junction box cover that makes installation and maintenance easier and faster. It is available with 7 output RPM options.

- Cartridge output seals eliminate shaft grooving and reduce oil leaks
- Single bolt junction box cover makes installation and maintenance easier and faster
- 6 gear ratio options (20:1, 25:1, 30:1, 40:1, 50:1 and 60:1)
- Available with three 3-phase motor options CSA, CE, CCC and SASO certified motors, IP 45 rated
- Aluminum finned stator for superior heat dissipation
- Motor drain holes protected by UMC's exclusive Spray Guard™ for superior spray protection
- Internally vented junction box protects motor lead connections from moisture
- Magnet wire to motor lead connections covered with Teflon tubing and encapsulated with P.D. caps for superior moisture protection
- Class H wire and Class F insulation
- Thermally protected motor with automatic reset located in the junction box
- Multi-bolt mounting pattern fits (3 3/8" x 6 3/8"), (4 3/4" x 7 1/4") and (5" x 6") bolt patterns
- Top oil fill plug positioned to set the correct oil level
- Integrated crop guard for coupler shields to nest and protect oil seals from crop wrapping and debris
- Seals savers on output to protect oil seals

Part Number	Gear Ratio	Motor HP	Service Factor	Volts AC	Frequency	Output RPM	Full Load AMP
06169-101M-E	60:1	1.50HP PEM/IE3	1.0	460/415/380	60/50/50 Hz	29/24 RPM	2.2/2.4/2.5 A
06169-101K-E	40:1	1.50HP PEM/IE3	1.0	460/415/380	60/50/50 Hz	43/36 RPM	2.2/2.4/2.5 A
06169-101B-E	30:1	1.50HP PEM/IE3	1.0	460/415/380	60/50/50 Hz	58/48 RPM	2.2/2.4/2.5 A
06169-101F-E	25:1	1.50HP PEM/IE3	1.0	460/415/380	60/50/50 Hz	68/56 RPM	2.2/2.4/2.5 A
06169-101D-E	20:1	1.50HP PEM/IE3	1.0	460/415/380	60/50/50 Hz	86/71 RPM	2.2/2.4/2.5 A

CENTER DRIVE GEAR MOTOR

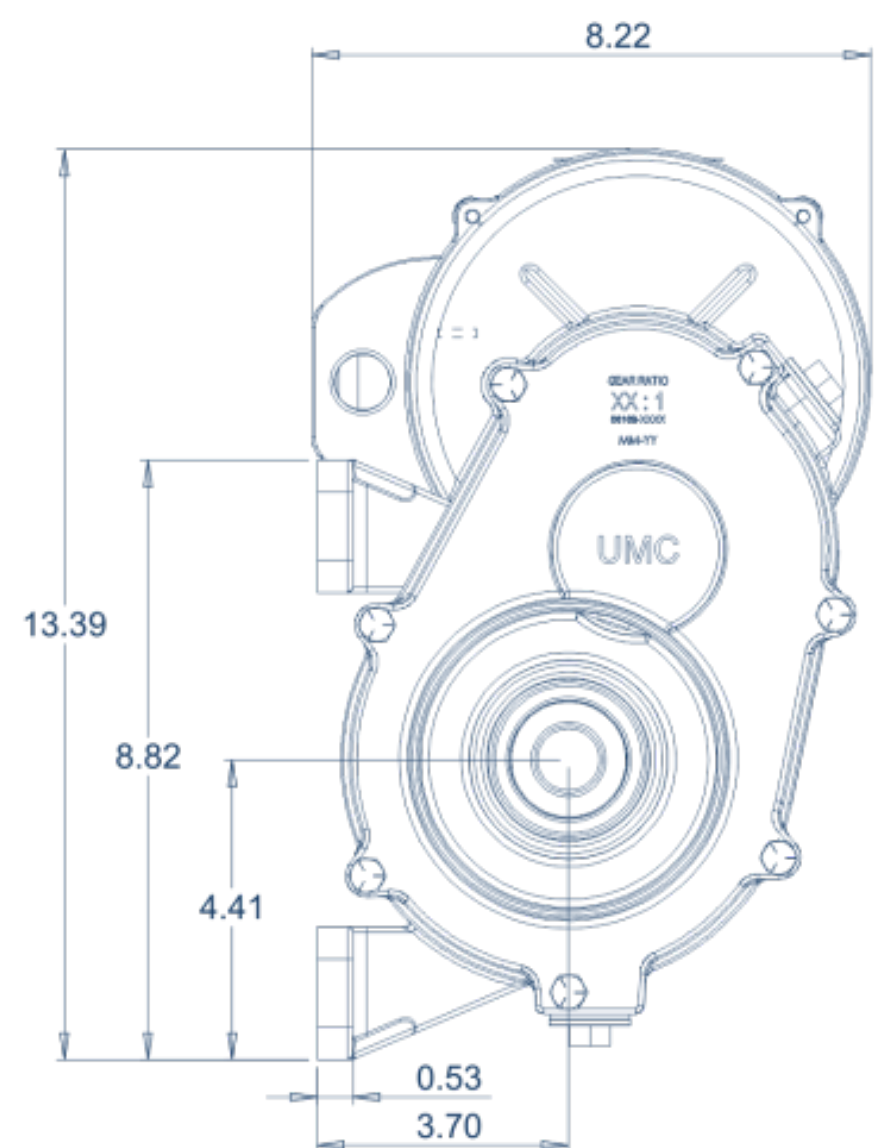
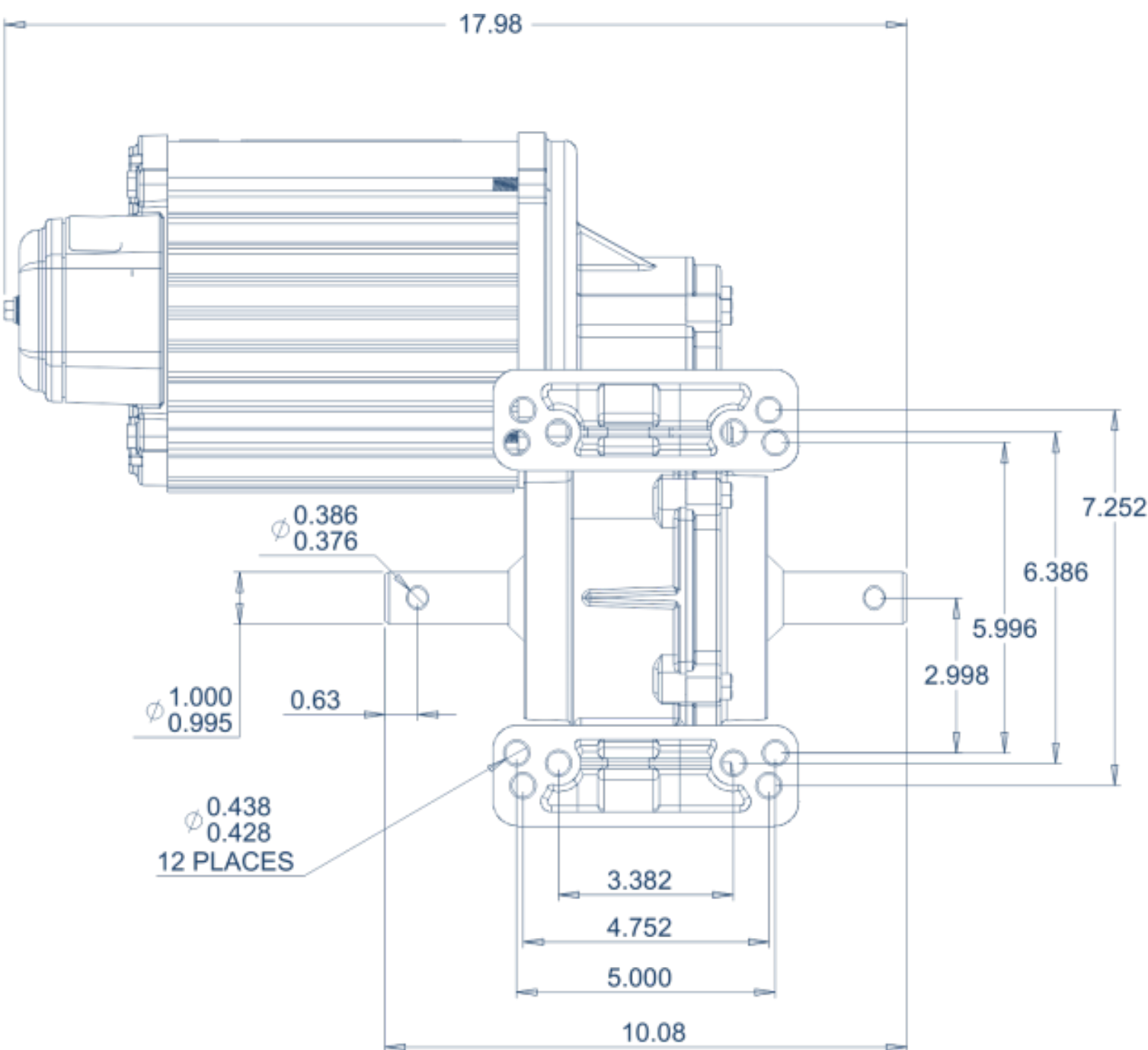
Quality Irrigation Products

Power Saver® 4 Premium Efficient
The most advanced center drive in the industry

The Premium Efficient UMC® Power Saver® 4 is our newest high performance helical center drive designed for use on center pivots and lateral / linear irrigation systems. It is a direct replacement for its predecessor, the Power Saver® 3.5, and has several new features that set it apart from every other center drive in the industry.



Dimensional Drawing | Power Saver® 4 - Premium Efficient



FEATURES AND BENEFITS

The Premium Efficient UMC® Power Saver® 4 center drive features a high efficiency helical gear reduction, a 1.50HP PEM / IE3 motor and is available with 5 output RPM options.

- Cartridge output seals eliminate shaft grooving and reduce oil leaks
- Single bolt junction box cover makes installation and maintenance easier and faster
- 95% efficient helical gear reduction
- Heat treated forged steel gears result in less wear and quieter operation
- 5 gear ratio options (20:1, 25:1, 30:1, 40:1 and 60:1)
- CSA and CE certified motors
- IP 45 rated
- Aluminum finned stator for superior heat dissipation
- Motor drain holes protected by UMC's exclusive Spray Guard™ for superior spray protection
- Internally vented junction box protects motor lead connections from moisture
- Magnet wire to motor lead connections covered with Teflon tubing and encapsulated with P.D. caps for superior moisture protection
- Class H wire and Class F insulation
- Thermally protected motor with automatic reset located in the junction box
- Multi-bolt mounting pattern fits (3 3/8" x 6 3/8"), (4 3/4" x 7 1/4") and (5" x 6") bolt patterns
- Top oil fill plug positioned to set the correct oil level
- Integrated crop guard for coupler shields to nest and protect oil seals from crop wrapping and debris
- Seals savers on output to protect oil seals

Part Number	Gear Ratio	Motor HP	Service Factor	Volts AC	Frequency	Output RPM	Full Load AMP
06169-101M-E	60:1	1.50HP PEM/IE3	1.0	460/415/380	60/50/50 Hz	29/24 RPM	2.2/2.4/2.5 A
06169-101K-E	40:1	1.50HP PEM/IE3	1.0	460/415/380	60/50/50 Hz	43/36 RPM	2.2/2.4/2.5 A
06169-101B-E	30:1	1.50HP PEM/IE3	1.0	460/415/380	60/50/50 Hz	58/48 RPM	2.2/2.4/2.5 A
06169-101F-E	25:1	1.50HP PEM/IE3	1.0	460/415/380	60/50/50 Hz	68/56 RPM	2.2/2.4/2.5 A
06169-101D-E	20:1	1.50HP PEM/IE3	1.0	460/415/380	60/50/50 Hz	86/71 RPM	2.2/2.4/2.5 A

CENTER DRIVE GEAR MOTOR

Quality Irrigation Products

Power Saver® 4 Inverter Duty

Designed for constant move center pivot irrigation

The Inverter Duty UMC® Power Saver® 4 center drive is designed for use on constant move center pivots, lateral / linear irrigation systems and corner arms. When used in conjunction with an inverter, these units are capable of a wide range of speed allowing for use of a pivot in a versatile range of applications.



FEATURES AND BENEFITS

The Inverter Duty UMC® Power Saver® 4 center drives were designed with the future of center pivot irrigation in mind. They have been field proven on constant move corner arms and constant move center pivot irrigation systems.

- Cartridge output seals eliminate shaft grooving and reduce oil leaks
- 95% efficient helical gear reduction
- Heat treated forged steel gears result in less wear and quieter operation
- 4 output RPM range options
- Available with two 3-phase inverter duty motor options
- CSA and CE certified motors
- Aluminum stator for superior heat dissipation
- Motor drain holes protected by UMC's exclusive Spray Guard™ for superior spray protection
- Magnet wire to motor lead connections covered with Teflon tubing and encapsulated with P.D. caps for superior moisture protection
- Class H wire and Class F insulation
- Multi-bolt mounting pattern fits (3 3/8" x 6 3/8"), (4 3/4" x 7 1/4") and (5" x 6") bolt patterns
- Top oil fill plug positioned to set the correct oil level
- Integrated crop guard for coupler shields to nest and protect oil seals from crop wrapping and debris
- Seals savers on output to protect oil seals
- The center drive's Red Stripe Design is a trademark of
- Universal Motion Components Co., Inc. registered in the U.S.

DRIVELINE COUPLER

Quality Irrigation Products

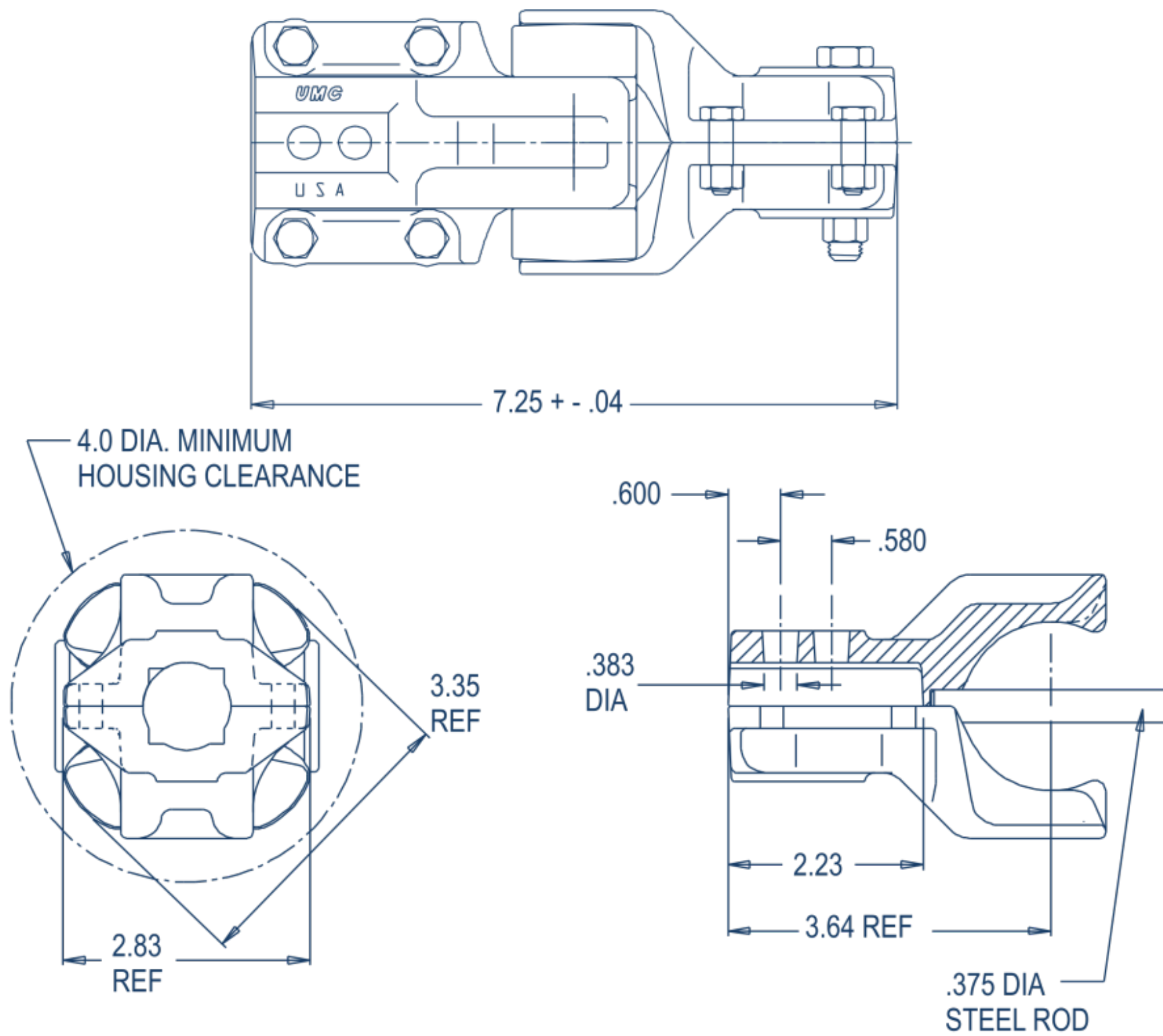
Standard Coupler

Designed to connect and protect the center drive gear motor and final drive gearboxes

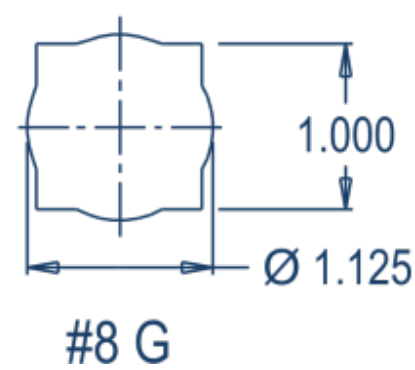
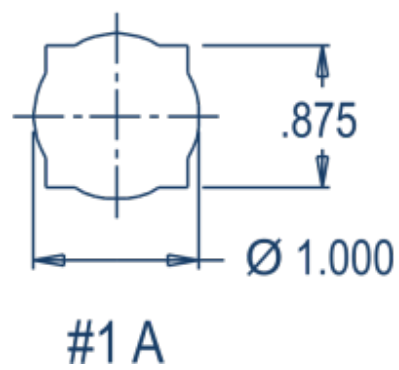
The UMC® Standard Coupler is a shock-attenuating drive connection between the center drive gear motor and final drive gearbox. It has been the industry standard for over 30 years on new systems from Original Equipment Manufacturers. It is available in a variety of sizes and configurations to fit any brand of center pivot.



Dimensional Drawing | Standard Coupler



Available shaft configurations



ATLANTIS
CENTER PIVOT & LINEAR IRRIGATION SYSTEMS

COUNT ON IT

FEATURES AND BENEFITS

The UMC® Standard Coupler is designed to connect the center drive gear motor to the final drive gearboxes. In addition to connecting these critical drive train components the coupler acts as both a torque dampener to absorb start up torque from the gear motor and as a fuse to protect the other critical drive train components in an overload condition.

- Shock-attenuating puck insert allows for softer starts and stops, extending final drive gearbox life
- Designed as a fuse to protect the other critical drive train components in an overload condition
- Alignment rod holds insert in place and maintains alignment under extreme loads
- Urethane insert is an environmentally stable material with excellent UV and chemical resistance
- Grooved insert option converts any coupler for a towable application
- UMC SQUEX-bolts (Square-Neck, Hex-Head) create unique anti-rotation feature that allows for fast single wrench assembly
- Curved insert pressure pads compensate for out of line conditions
- Proven service record of over 30 years