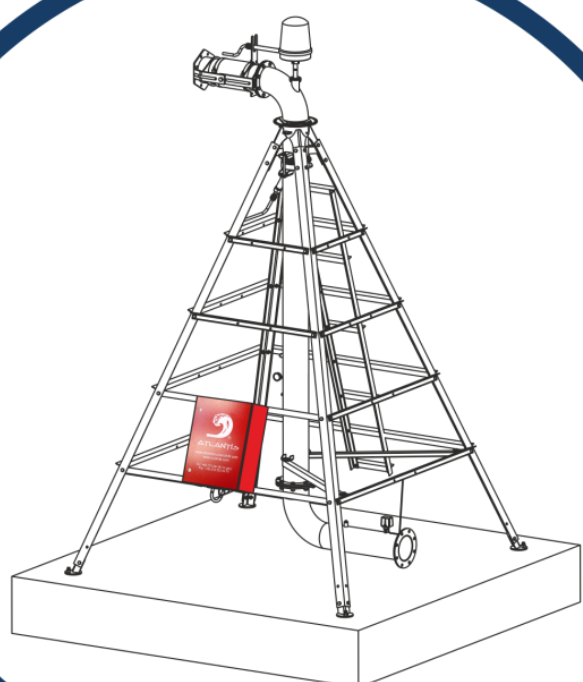


VICKY PRODUCTS

'We work with long-lasting brands for our customers'

VICKY

GEARBOX & CENTER DRIVE & COUPLER



VICKY GEARBOX - WHEEL DRIVE MOTOR VICKY GEARBOX USAGE PLACE



Input Caps
High Tensile Castings with Water Drainage System and Tapped Holes for Easy Installation of DPS-100 Drivetrain Protection System

Input Shaft Seals
Triple Lip for maximum Protection

Thrust Bearings
On Input Shaft have Highest Load Rating

Input Shaft Protector
Gold Zinc Dichromate plated for Maximum Corrosion Resistance

Surface Finish
Worms are either Precision Ground to 32 Ra or Precision Finished to 125 Ra for Higher Efficiency Rating

Large Face Width
High Contact, Large Pitch Gear Set gives Higher Torque Loads than Competition

External V-Ring Seals
Provide Additional Barrier against Debris and Corrosion

Universal Bolt Pattern
Allows Usage on Virtually All Pivots

Bull Gears
Made from either High Tensile Castings or are Centrifugally Cast Aluminum Bronze

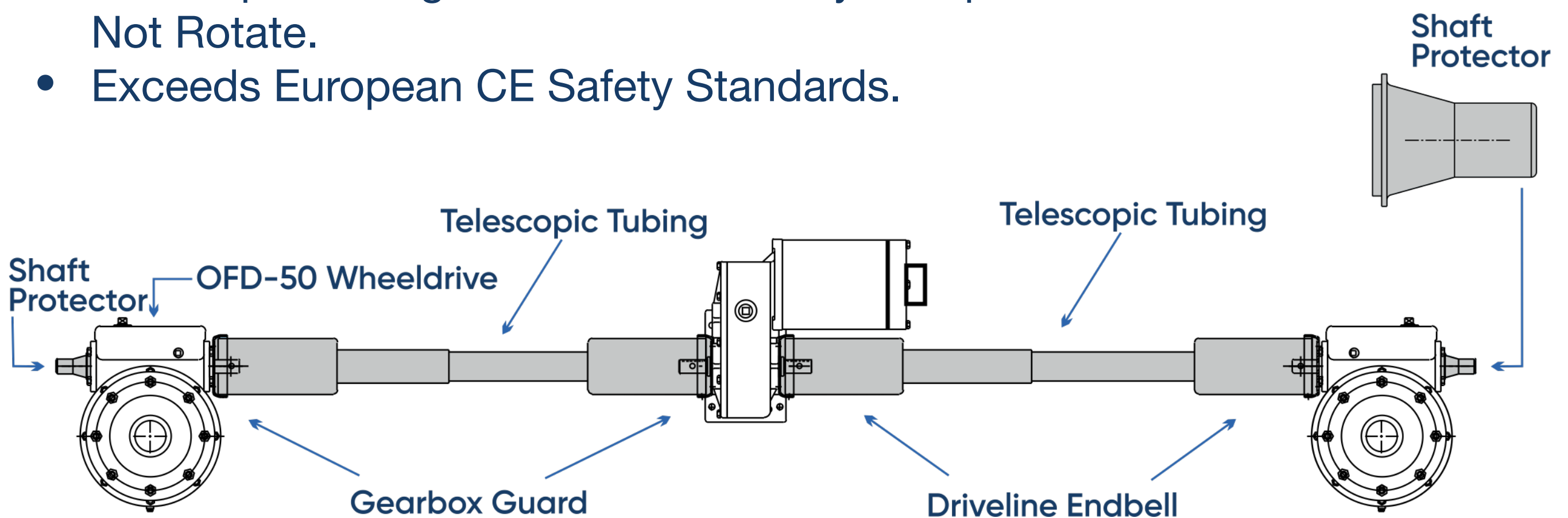
Double Welded Output Shaft & Flange
enables usage of the largest Tires & Wheels

ATLANTIS
CENTER PIVOT & LINEAR IRRIGATION SYSTEMS

COUNT ON IT

VICKY GEARBOX - DRIVELINE SHIELDS

- The Only System Available that Completely Protects Drivetrain from Crop Wrappage.
- Polyethelene Plastic withstands UV Rays and is Weatherproof.
- Telescopic Tubing and End Bells easily “Snap” Into Place and Will Not Rotate.
- Exceeds European CE Safety Standards.



VICKY GEARBOX - SPECIFICATIONS

LARGE-CAPACITY RUBBER DIAPHRAGM

Expands with heat and pressure to minimize water condensation.

INPUT AND OUTPUT BEARINGS

Case hardened to provide the highest quality and highest load rating available in the industry.

WORM GEAR

High-strength ductile iron provides significantly longer wear life than steel when combined with a cast iron bull gear.

TOOTH DESIGN

Industry exclusive 25° tooth angle provides 40% longer life and better reliability in tough conditions compared to normal 14 1/2° tooth designs.

LARGEST BULL GEAR NECK AND KEYWAY

Provides strength in critical load-bearing area.

EXPANSION CHAMBER

Cap made of corrosion-resistant cast aluminum; rubber diaphragm allows oil to expand and contract during operation. Vented cap prevents pressure buildup and prevents seals from leaking.

THREADED ENDCAP

Allows accurate bearing preload to increase bearing life.

50:1 GEAR RATIO

Fully recessed tooth design keeps oil between engaged gears.

BULL GEAR

High-strength cast iron provides the highest load capacity and longest life in the industry. Optional bronze gear is available for extreme conditions.

MULTI-VISCOSITY GEARBOX OIL

Exceeds 85w140 GL5 oil for long gear wear under extreme load conditions.

ATLANTIS
CENTER PIVOT & LINEAR IRRIGATION SYSTEMS

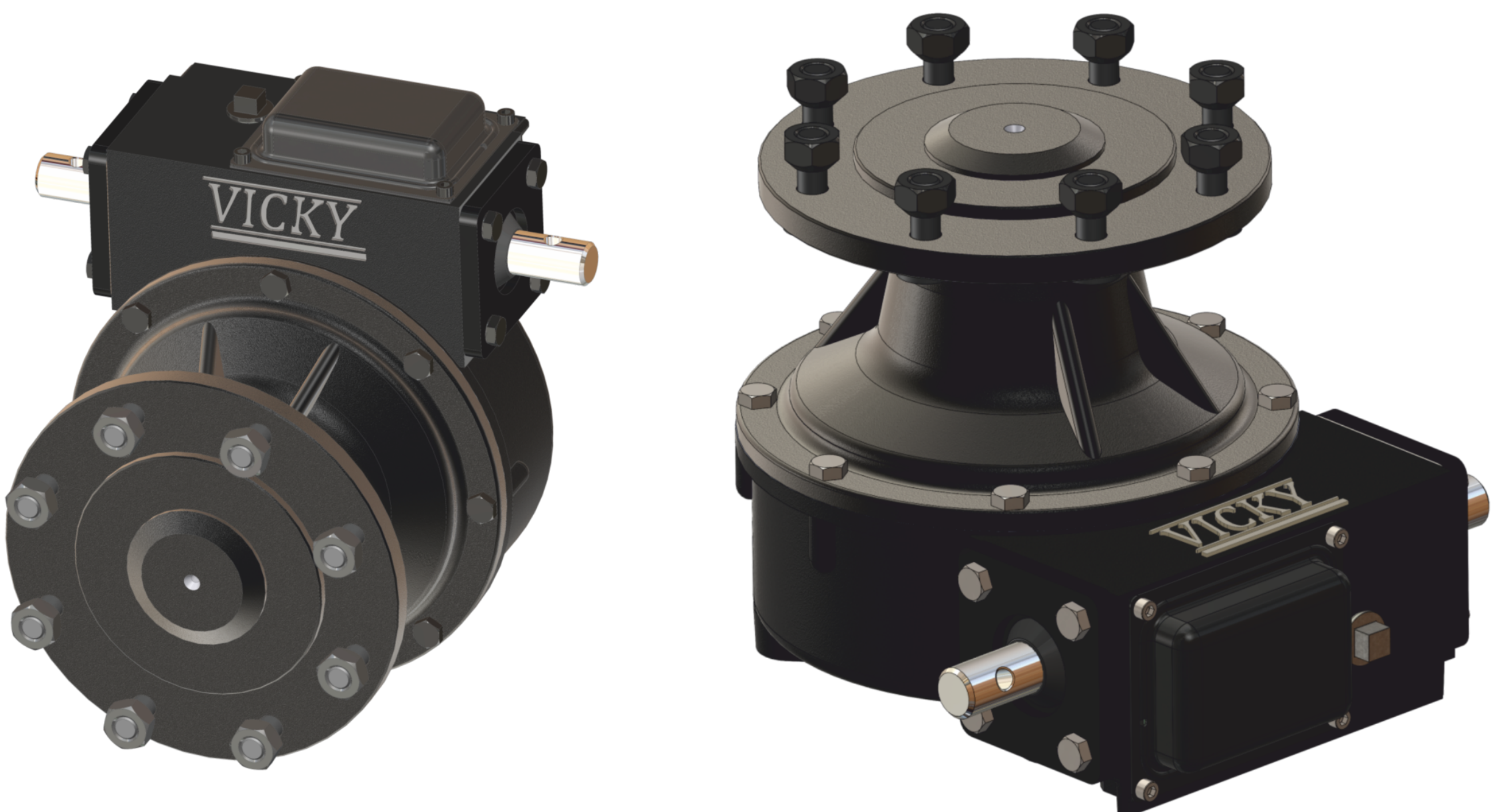
COUNT ON IT

VICKY GEARBOX - THE STRONGEST MOST TRUSTED GEARBOX

Our mission in Atlantis Center Pivot & Linear Irrigation Systems is to present the most durable and least serviceable gearbox to the sector. Atlantis gearboxes are presented to users after long-term structural and functional tests. We are one of the few companies in the world that can produce their own gearboxes.

For this reason, Atlantis takes pride in being a robust, reliable and responsive gearbox manufacturer.

1. Superior design: Long-term use due to tested and proven, extended lifetime.
2. Improved design and increased torque: The conclusion we have reached from our engineering is that more torque
3. For increased tightness: More reliable protection thanks to newly designed shaft and improved seal. In this way, the entry of sludge and dust into the gear is minimized.
4. Bearing reduced as a result of special design.
5. More load carrying capacity: Specially designed and produced inlet and outlet bearings and their outer surface are hardened.
6. More resistant to extraordinary conditions: Gearbox housing designed to work in harsh areas. Use wherever you want.
7. Different usage options: More or less power, we have many options depending on what you are looking for.

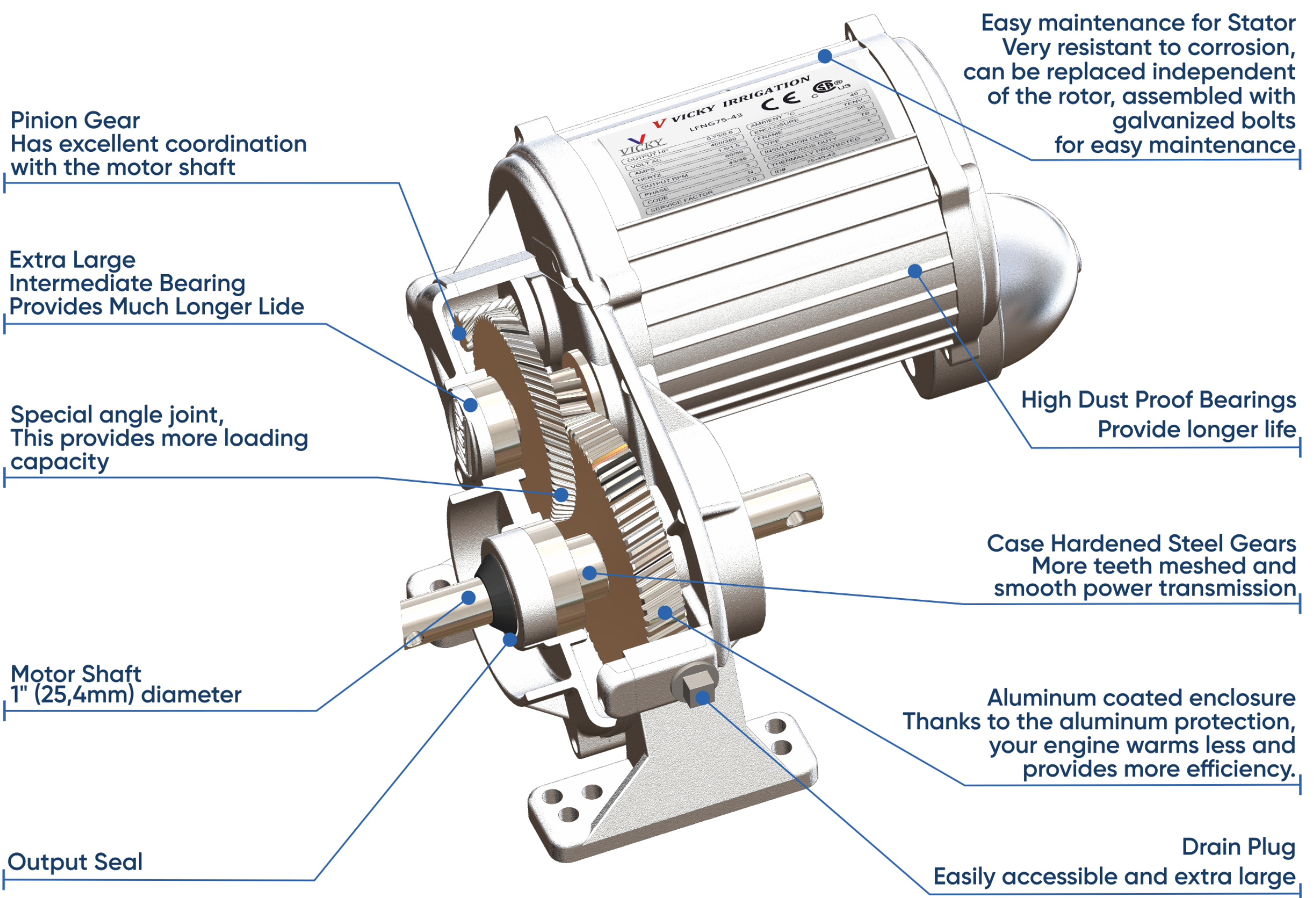


VICKY CENTER DRIVE

VICKY CENTER DRIVE USAGE PLACE



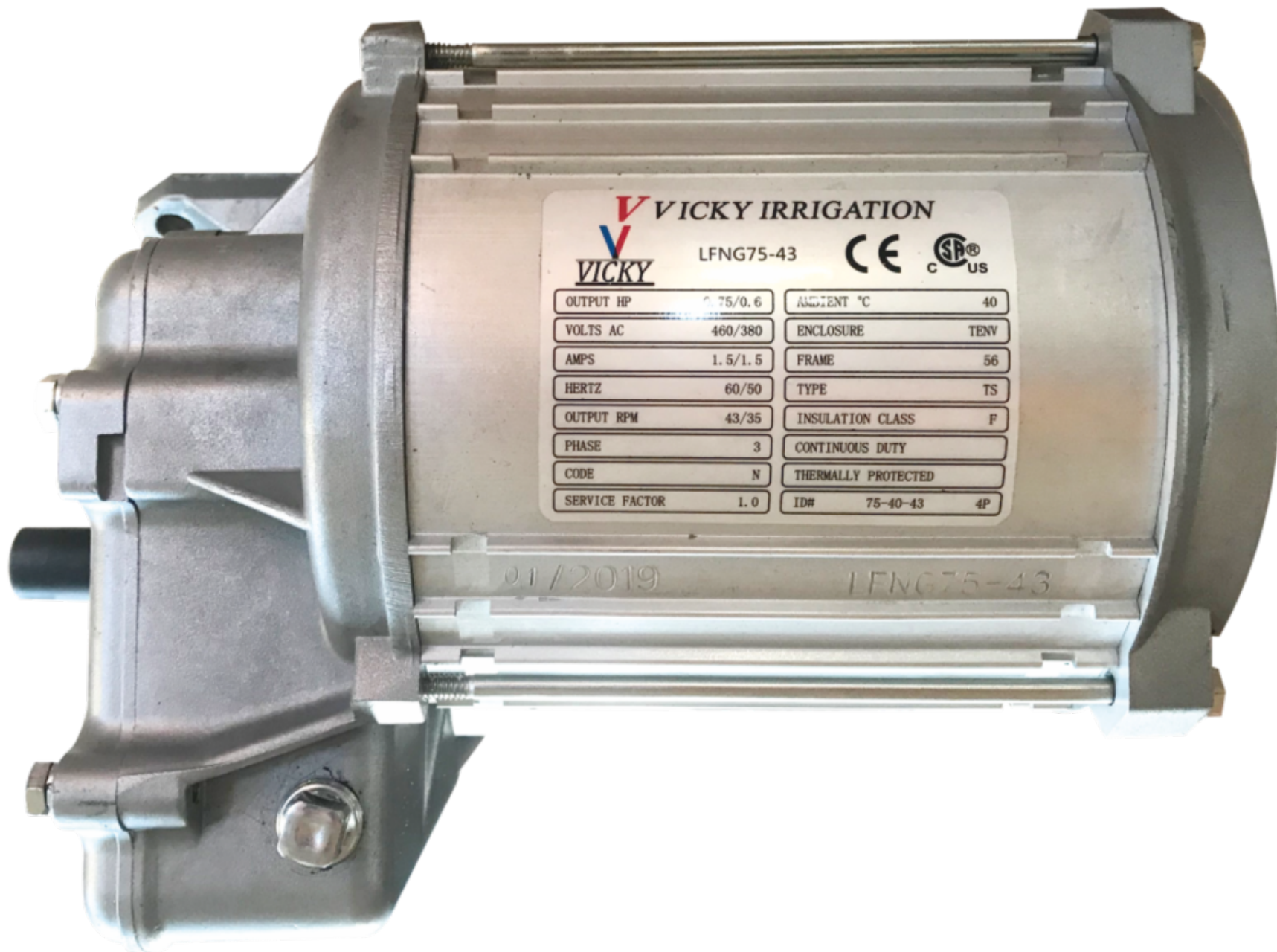
VICKY CENTER DRIVE DETAILS



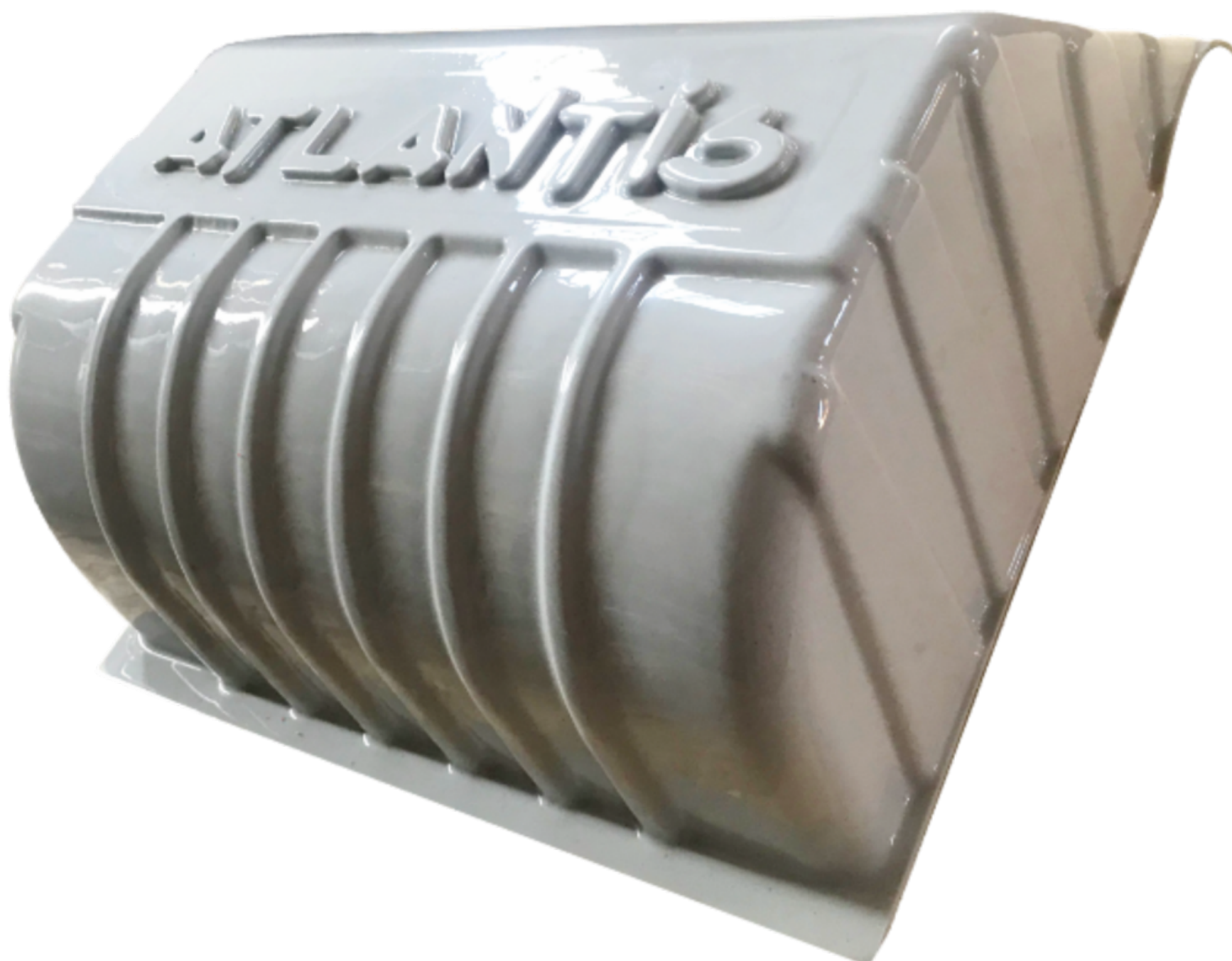
VICKY CENTER DRIVE - INCREASE YOUR PERFORMANCE

Have high performance, long-term use and easily accessible spare parts with the GearMotors we designed. Get proven irrigation high performance thanks to Atlantis GearMotors.

This design is designed to keep your Center pivots and liners running for years. Different power and speed options will provide the most suitable solution for you wherever you want to use it.



EXTRA PROTECTION COVER : EXTRA PROTECTION COVER AGAINST EXTERNAL FACTORS



ATLANTIS
CENTER PIVOT & LINEAR IRRIGATION SYSTEMS

COUNT ON IT

GET MORE POWER WITH STEEL GEARS

ALUMINUM COATED ENCLOSURE

Thanks to the aluminum protection, your engine warmsless and provides more efficiency.

IMPROVED VENTILATION

Better ventilation junction box thanks to improved design prevents moisture and contaminants from corroding the wire connections.

PLANT PROTECTION

Prevents plants from entering the engine and protects the shaft seals.

INTEGRAL PINION GEAR ELIMINATES COUPLER TO IMPROVERELIABILITY

MORE SECURITY

Integrated pinion gear eliminates coupler to increase reliability.

HIGH TORQUE

Specially designed motor windings, high operating torque.

Description	Power (Hp)	Driver Speed (rpm)		Drive Ratio	Output Speed (rpm)		Output Torque		Weight Kg/lbs
		(460 V)	(380 V)		(460 V)	(380 V)	(460 V)	(380 V)	
LFNG75-34	0,75	1720	1420	50:1	34	28	157.3 Nm	157.8 Nm	25.0/55
LFNG75-43	0,75	1720	1420	40:1	43	35	124.4 Nm	126.2 Nm	25.0/55
LFNG10-34	1,00	1720	1420	50:1	34	28	200.0 Nm	200.0 Nm	26.0/57
LFNG10-43	1,00	1720	1420	40:1	43	35	158.0 Nm	158.0 Nm	26.0/57
LFNG15-34	1,50	1720	1420	50:1	34	28	314.5 Nm	315.5 Nm	27.7/61
LFNG15-43	1,50	1720	1420	40:1	43	35	248.7 Nm	252.4 Nm	27.7/61
LFNG15-57	1,50	1720	1420	30:1	57	47	187.6 Nm	188.0 Nm	25.0/55
LFNG15-68	1,50	3440	2840	50:1	68	57	157.3 Nm	155.0 Nm	26.8/59
LFNG15-86	1,50	3440	2840	40:1	86	71	124.4 Nm	124.4 Nm	26.8/59

VICKY COUPLER SHAFT

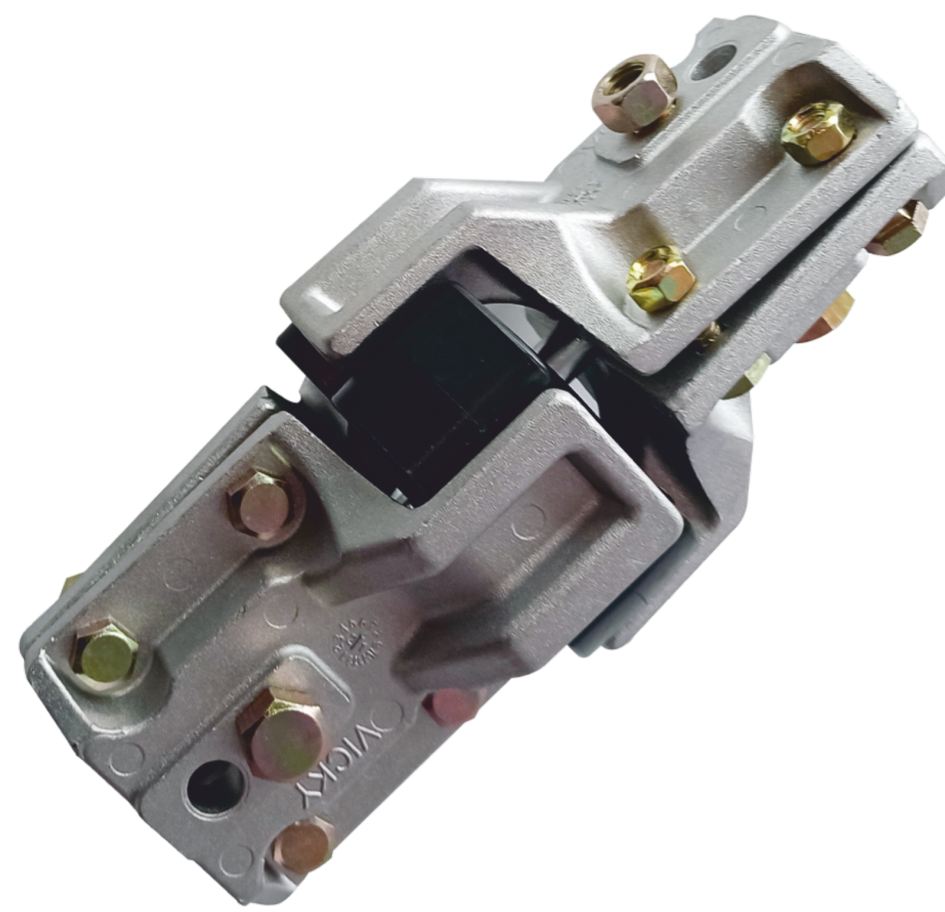
DRIVELINE COUPLER SHAFT

Quality Irrigation Products

STANDARD COUPLER

Designed to connect and protect the center drive gear motor and final drive gearboxes.

The VICKY® Standard Coupler is a shock-attenuating drive connection between the center drive gear motor and final drive gearbox. It has been the industry standard for over 23 years on new systems from Original Equipment Manufacturers. It is available in a variety of sizes and configurations to fit any brand of center pivot.



<u>PART NUMBER</u>	<u>01355-121J</u>	<u>1" RD. X 7/8" SQ.</u>	<u>1 1/8" RD. X 1" SQ.</u>
<u>01355-121M</u>	<u>01355-121I</u>	<u>1" RD. X 3/4" SQ.</u>	
<u>01355-121P</u>	<u>OUTPUT RPM</u>	<u>1" RD. X 1" SQ.</u>	

FEATURES AND BENEFITS

The VICKY® Standard Coupler is designed to connect the center drive gear motor to the final drive gearboxes. In addition to connecting these critical drive train components the coupler acts as both a torque dampener to absorb start up torque from the gear motor and as a fuse to protect the other critical drive train components in an overload condition.

- * Shock-attenuating puck insert allows for softer starts and stops, extending final drive gearbox life.
- * Designed as a fuse to protect the other critical drive train components in an overload condition.
- * Alignment rod holds insert in place and maintains alignment under extreme loads.
- * Urethane insert is an environmentally stable material with excellent UV and chemical resistance.
- * Grooved insert option converts any coupler for a towable application.
- * VICKY-bolts (Square-Neck, Hex-Head) create unique anti-rotation feature that allows for fast single wrench assembly.
- Curved insert pressure pads compensate for out of line conditions.
- Proven service record of over 23 years.